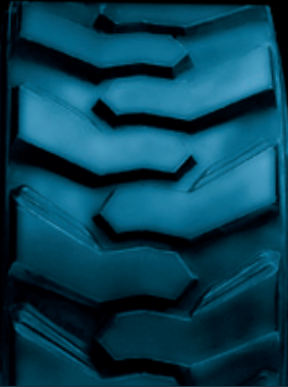




SK-900 & SK-800

TOTAL SOLUTION

SKID STEER TIRES



The Trelleborg Skid Steer range has been developed for intensive use on skid steer loaders, aerial/boom lifts & truck mounted forklifts. This product offers customers a high quality range of tires besides the Trelleborg solid rubber tires and industrial pneumatics.

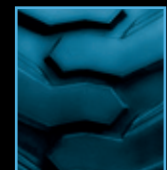
All the tires have a wide lug tread pattern that provides optimal grip and traction in both hard and sandy surface conditions. The cross-ply or diagonal heavy ply construction further insures high stability and maximum safety. The compounds are of high quality allowing for maximum tire life and increased cutting & chipping resistance.

- **NATURAL RUBBER**
- **HIGH STABILITY
MAXIMUM SAFETY**
- **OPTIMAL GRIP
AND TRACTION**
- **EXTENDED
TIRE LIFE**



TRELLEBORG SK-900

- **TRELLEBORG ENGINEERED**
- **DESIGNED FOR HEAVY DUTY USE**
- **DEVELOPED TO PROVIDE TOP PERFORMANCE**
- **PREMIUM COMPOUNDS FOR MAXIMUM TIRE LIFE
AND HIGH CUTTING & CHIPPING RESISTANCE**
- **FLAT PROFILE FOR INCREASED SURFACE CONTACT
AND STABILITY**
- **REINFORCED SIDEWALL FOR IMPROVED PROTECTION
AGAINST SIDE IMPACTS**
- **EXCELLENT RIDE QUALITY**



SK-900

Size	P.R.	Rim Width	Inflated dimensions (mm)		Inflation Pressure (PSI)	Inflation Pressure (bar)	Weight (kg)	Load Rating (kg) @ 8 km/h
			Width	O.D.				
10-16.5	8	8.25	270	769	55	3.8	27.0	1.875
10-16.5	10	8.25	270	769	75	5.2	27.0	2.140
12-16.5	10	9.75	325	820	65	4.5	35.0	2.545
14-17.5	14	10.50	381	941	75	5.2	58.3	3.875
15-19.5	14	11.75	393	1.000	100	6.9	77.6	5.070

ALL TUBELESS TYPE



TRELLEBORG SK-800

- **TRELLEBORG ENGINEERED**
- **HIGH QUALITY COMPOUNDS**
- **DESIGNED FOR GENERAL PURPOSE USE IN CONSTRUCTION
AND INDUSTRIAL APPLICATIONS**
- **COST EFFECTIVE ALL-ROUND TIRE**
- **APPEALING TIRE DESIGN WITH RIM GUARD**



SK-800

Size	P.R.	Rim Width	Inflated dimensions (mm)		Inflation Pressure (psi)	Inflation Pressure (bar)	Weight (kg)	Load Rating (kg) @ 8 km/h
			Width	O.D.				
10-16.5	8	8.25	270	751	55	3.80	22.5	1.875
10-16.5	10	8.25	270	751	65	4.50	22.5	2.140
12-16.5	10	9.75	308	815	65	4.50	31.0	2.545
23x8.5-12	6	7.00	216	568	50	3.50	12.0	825
27x8.5-15	8	7.00	216	680	60	4.10	15.0	1.110

ALL TUBELESS TYPE